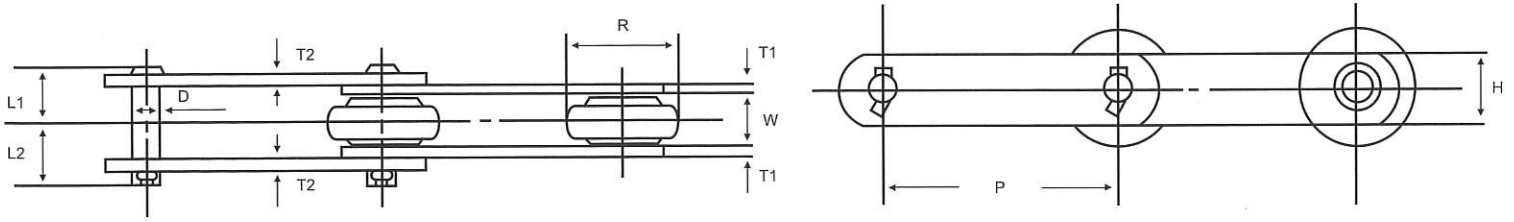


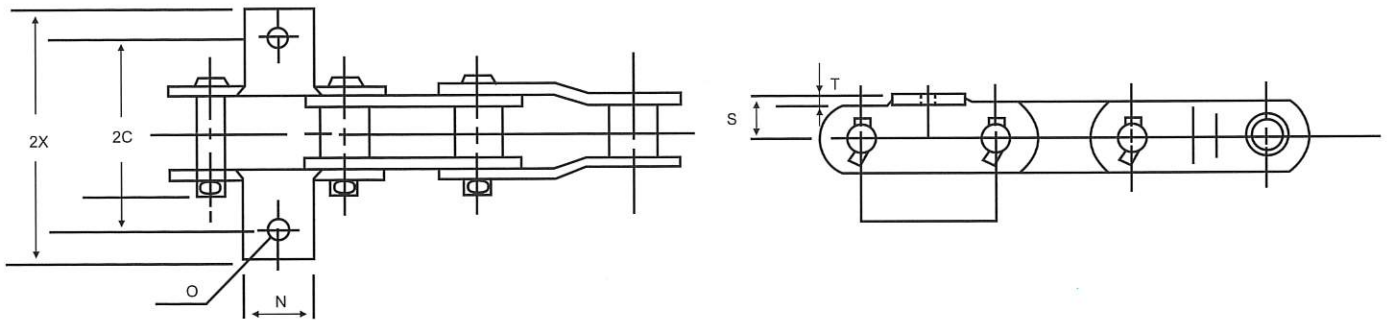
KAIDO PALM OIL MILL CONVEYOR CHAIN

SOLID PIN CONVEYOR CHAIN (TEE PIN TYPE)



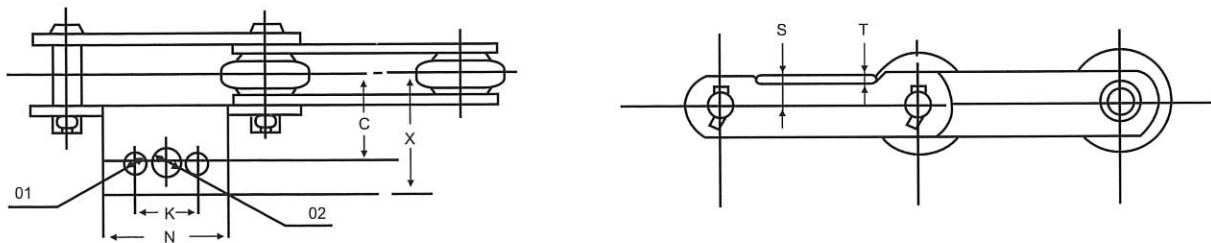
Kaido Chain No	Pitch P	Inner Width W	Roller Diameter R	Pin Diameter D	L1	L2	Plate Height H	Inner Plate Thickness T1	Outer Plate Thickness T2	Average Tensile Strength (kgf)
K-RF 9503-S	76.70	30.00	29.00	14.50	33.00	36.00	38.10	6.30	6.30	11,500
K-RF 90R-S	101.60	21.40	47.60	11.32	28.50	28.50	31.80	4.80	4.80	9,300
K-RF 94R-S	101.60	30.00	50.80	14.50	36.00	36.00	38.10	6.30	6.30	14,900
K-RF 150040R-S	101.60	18.40	47.60	11.30	28.50	28.50	38.10	6.30	4.80	11,500
K-RF 604R-S	152.40	30.00	50.80	14.50	36.00	36.00	38.10	6.30	6.30	14,900

SOLID PIN CONVEYOR CHAIN (TEE PIN TYPE) K-1 ATTACHMENT



Kaido Chain No	2C	2X	N	O	S	T
K-RF 9503-S	111.1	145	40	12	25.40	6.30

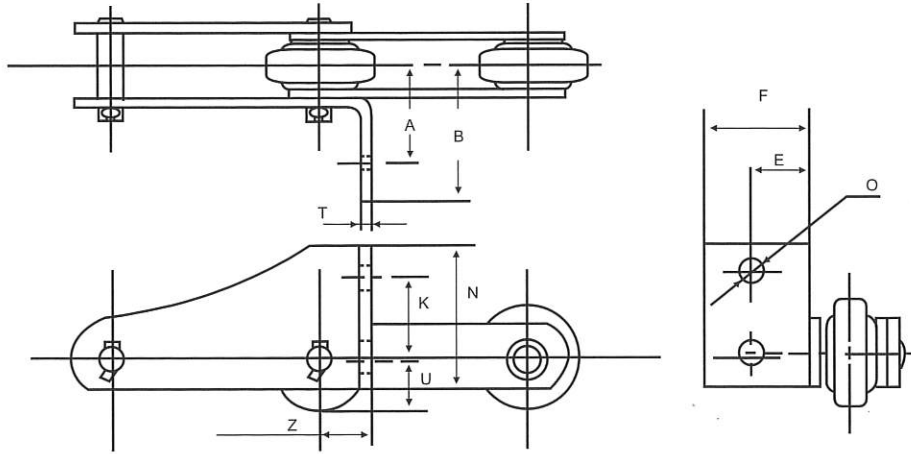
SOLID PIN CONVEYOR CHAIN (TEE PIN TYPE) A-2 / K-2, K-3 ATTACHMENT



Kaido Chain No	C	X	K	N	01	02	S	T	Remarks
K 90R-S	44.50	62.00	31.80	63.50	10.70	13.90	15.90	4.80	A-3, K3
K 94R-S	44.50	62.00	31.80	63.50	10.70	-	19.10	6.30	A-2, K2
K-S 150040R-S	44.45	61.70	31.80	71.60	10.70	13.90	31.80	6.30	A-3, K3
K-RF604R-S	50.80	67.50	50.80	90.00	12.00	-	19.10	6.30	A-2, K2

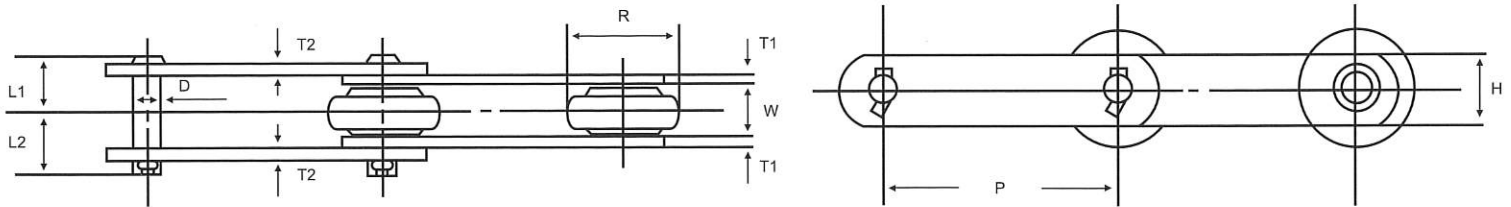
All Dimensions in MM

SOLID PIN CONVEYOR CHAIN (TEE PIN TYPE) LA-2 ATTACHMENT



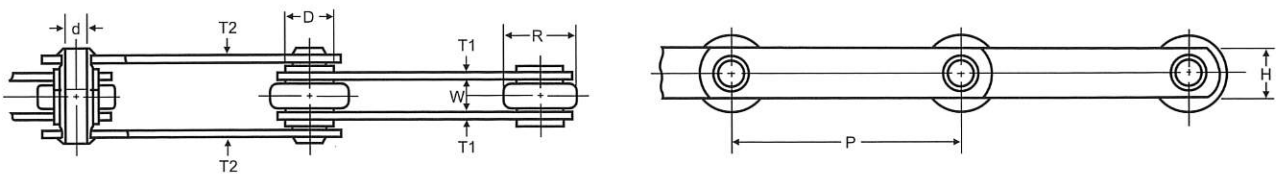
Kaido Chain No	A	B	Z	T	K	N	O	E	F	U
K 90R-S	50.80	70.00	23.50	4.80	40.00	70.00	12.00	34.30	53.50	22.90

SOLID PIN CONVEYOR CHAIN (RIVETTED TYPE)



Kaido Chain No	Pitch P	Roller Diameter R	Pin Diameter D	Inner Width W	Plate Height H	Inner Plate Thickness T1	Outer Plate Thickness T2	Average Tensile Strength (lbf)
K-S220040	101.60	47.60	19.05	19.05	39.00	5.10	5.10	22,000
K-S400060	152.40	66.70	26.92	25.40	50.80	8.00	6.50	40,000
K-S600060	152.40	66.70	26.92	25.40	50.80	9.00	8.00	60,000
K-S800060	152.40	88.90	31.80	38.10	61.00	10.00	10.00	80,000

HOLLOW PIN CONVEYOR CHAIN



Kaido Chain No	Pitch P	Roller Diameter R	Pin Diameter D	Inner Width W	Hollow Pin d	Plate Height H	Inner Plate Thickness T1	Outer Plate Thickness T2	Average Tensile Strength (lbf)
K-210040HP	101.60	47.60	19.05	19.05	13.21	39.00	5.10	5.10	21,000
K-360060HP	152.40	66.70	26.92	25.40	19.56	51.00	8.00	6.50	36,000
K-500060HP	152.40	66.70	26.92	25.40	19.56	51.00	9.00	8.00	48,000
K-600060HP	152.40	88.90	31.80	38.10	23.10	61.00	10.00	10.00	60,000